



FIRE ARMOUR



- ✓ F.R. FABRICS
- ✓ NFPA 2112
- ✓ NFPA 70E

**ARM
YOURSELF**



SPECIFICATIONS



The Fire Armour by Flame is a superior coverall, that is available in an assortment of FR Fabrics, suitable for various work applications. All garments have been constructed to provide extra comfort and added Protection to the End User, through the use of Fabrics that are NFPA 70E and NFPA 2112 Compliant, which protect against Arc Flash and Flash Fire Hazards.

With the Safety of the user foremost in mind, this sturdy coverall comes equipped with Standard Safety features such as Double Stitching FR Thread for added strength and 2" wide FR reflective strips over the shoulders, around the waist, arms and legs for added visibility.

The Fire Armour coverall comes outfitted with double snaps on cuffs for adjustable fit, as well as two double stitched side pockets for added storage and convenience. The Fire Armour features additional ergonomic considerations such as elastic waist bands for maneuverability and double head, double stitched two way brass zippers, for ease of accessibility to under garments and comfort. Hidden snaps on the fold that covers zip add to the aesthetic appeal of this durable FR Garment.

The Quality and value guaranteed. Experience the Flame Advantage today..... with The Fire Armour by Flame.

Available, but not limited to, the following F.R. Fabrics

DuPont™
NOMEX® IIIA

DuPont™
NOMEX® Comfort

DuPont™
NOMEX® MHP

DuPont™
Protera



FRONT FEATURES

- Double Stitching FR thread for added strength.
- Double head, double stitched two way brass zippers, for ease of accessibility to under garments and comfort.
- Hidden Snaps on Fold that covers zip.
- Two Main Double Stitched Front Chest Pockets
- 2" wide reflective strips over shoulders, around waist, arms and legs for added visibility and safety
- Double snaps on cuffs for adjustable fit.
- Two Double stitched side pockets on pants for added storage and convenience.

BACK FEATURES

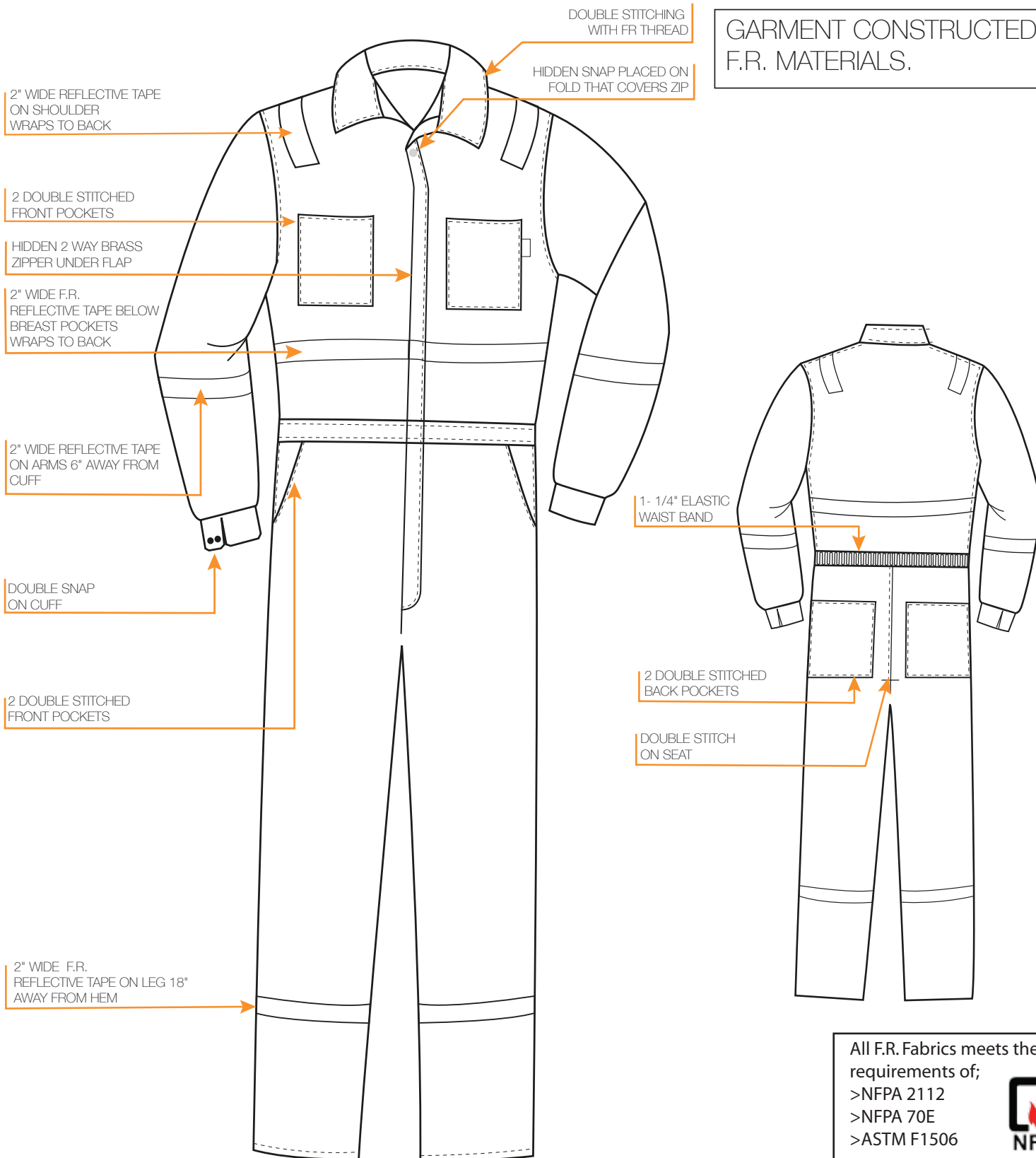
- Two double stitched back pockets for durability
- Double stitch on seat for added strength.
- Double stitched waist band for durability.
- 1-1/4" elastic waist band at back for comfort and maneuverability

STANDARD COVERALL OPTIONS

- Long sleeve Only
- Available in a Variety of Colors.

Additional customization available based on customer request and requested volume.

GARMENT CONSTRUCTED WITH F.R. MATERIALS.



All F.R. Fabrics meets the requirements of;

- >NFPA 2112
- >NFPA 70E
- >ASTM F1506

