



# FIRE SHIELD



**ARM  
YOURSELF**

- ✓ F.R. FABRICS
- ✓ NFPA 2112
- ✓ NFPA 70E



## SPECIFICATIONS

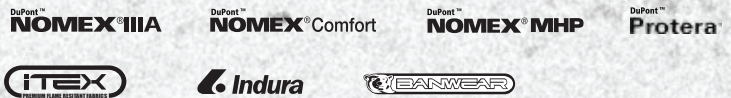


The Fire Shield garment by Flame is a uniquely constructed Coverall, that comes in an assortment of FR Fabrics. These garments have all been carefully designed to provide extra comfort and Protection of the End User. As the name suggests, this garment has been manufactured to safeguard the user against Arc Flash and Flash Fire Hazards, through the use of Fabrics that are NFPA 70E and NFPA 2112 Compliant.

Standard Safety features on the garment include Double Stitching FR Thread, a Placket under zipper to protect from heat and zipper pinching of the body and highly visible FR Reflective Strips on the Sleeves, legs and back. Characteristic of the sturdy, practical construction of Apparel by Flame, these FR Coveralls also feature ergonomic considerations such as elastic waist bands for maneuverability and double stitched side pockets for added storage and convenience. Aesthetic components include a hidden two way zipper under the flap and a smartly snap paced on the top of fold that covers zip.

Quality and value guaranteed. Experience the Flame Advantage today with The Fire Shield by Flame.

Available, but not limited to, the following F.R. Fabrics



### FRONT FEATURES

- Double Stitching FR thread for added strength.
- Double head, double stitched two way brass zippers, for ease of accessibility to under garments and comfort.
- Snap placed on the top of fold that covers zip for added safety, comfort and durability.
- Two Main Double Stitched Front Pockets..
- 1" wide reflective strips on sleeves, legs and backs for added visibility and safety
- Single snap on cuff for adjustability.
- Two Double stitched side pockets on pants for added storage and convenience..
- Hidden two way zipper under flap
- Placket under Zipper to protect from heat and zipper pinching of body.

### BACK FEATURES

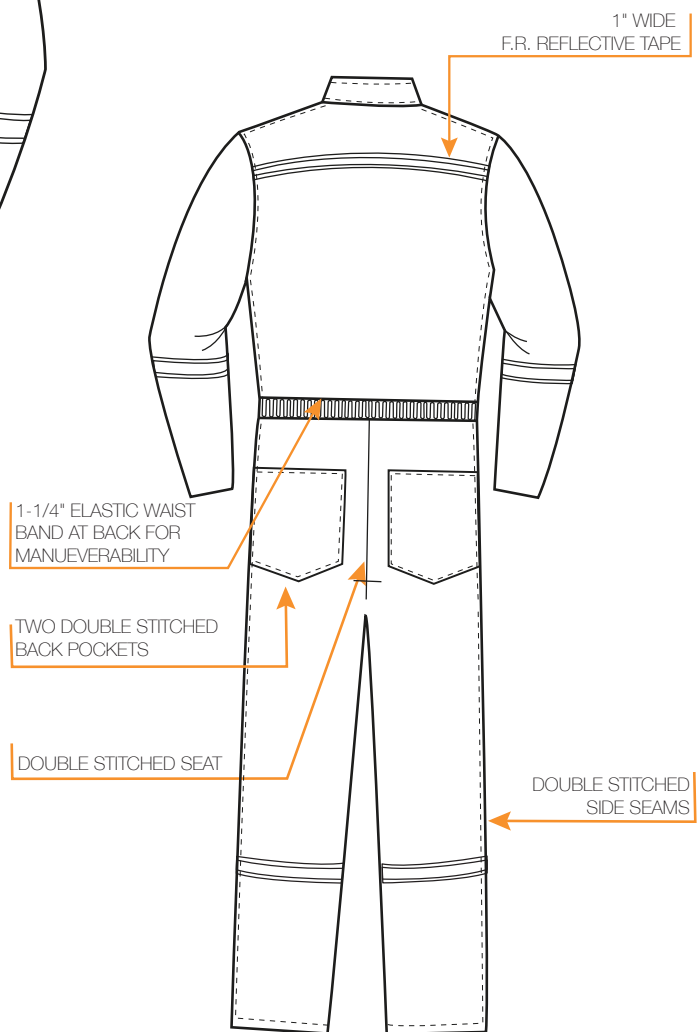
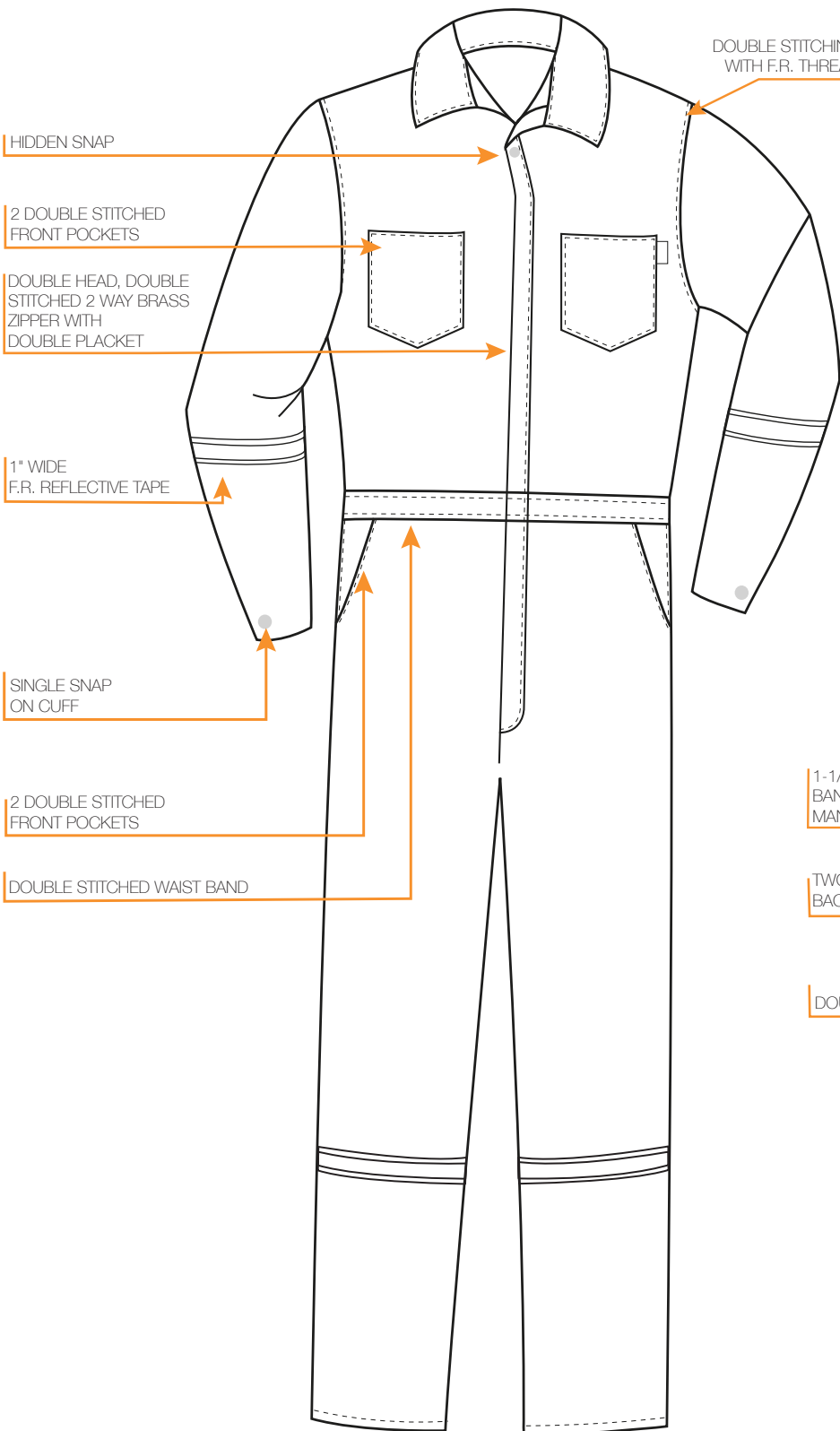
- Two double stitched back pockets for durability
- Double stitch on seat for added strength.
- Double stitched waist band for durability.
- 1-1/4" elastic waist band at back for comfort and maneuverability
- Side seams double stitched for added strength

### STANDARD COVERALL OPTIONS

- Long sleeve Only
- Available in a Variety of Colors.

*Additional customization available based on customer request and requested volume.*

GARMENT CONSTRUCTED WITH F.R. MATERIALS.



All F.R. Fabrics meets the requirements of;

- >NFPA 2112
- >NFPA 70E
- >ASTM F1506